
PRODUCT MANUAL

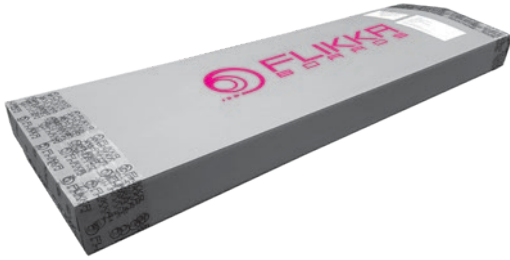
Thank you for choosing a Flikka Board.
We hope you love the product!

Before sending your board, we check it over and then pack it very carefully. Your board should arrive in excellent condition. Please open the box and check over for any signs of damage that may have occurred during transportation. If there is any damage please inform us immediately.



FLIKKA
BOARDS

IN THE BOX YOU SHOULD FIND:



HINT Protective foam can be reused for packing your board when traveling.

A BOARD

FLIKKA FOOT-STRAPS

Depending on the number of foot-straps positions you will get three or four foot-straps. We use stainless-steel screws and washer plates for foot straps fixing. We use two screws for each side of the foot-strap for strength and to avoid the foot-strap turning. Please use both screws on each side.



We provide you with the correct size hex allen key for the foot-strap screws. Push the screws through the washer plate and foot-strap, and then align the screws with the threads in the footstrap insert in the board deck. Turn the screws gently, in order to avoid cross-threading, and then tighten (don't pull Hulk here) until the washer plate



is firmly pulled down on to the board deck. There should be no play between the foot-strap and board. You don't need to use any glue as the screws won't unscrew by themselves.

If you do cross-thread and damage the screw, we provide spare screws with the board. Screw in the replacement screw first without the strap to "repair" the thread on the foot-strap insert, and then re-fit the foot-strap.

Foot-straps can be adjusted to your foot size and riding preference.

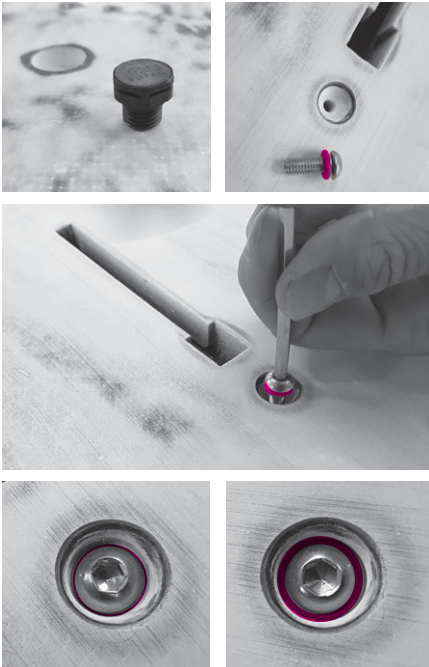
If your board comes with multiple foot-strap insert positions, we suggest you try the front straps in the back position first, and the back strap in forward position. Then later if this position is comfortable, you can mount the back straps on the back position (closer to the tail). This will give you more controlled position on the board and will help you turn tighter in the waves.

AIR VALVE

Your board may be equipped with either a Gore-Tex valve or a stainless-steel valve with a rubber seal ring.

STAINLESS STEEL SCREW AIR VALVE

If your board comes with the stainless-steel screw valve, it needs to be installed with rubber (orange) seal ring. Do not overtighten. When not in use, you are advised to un-tighten the screw when there is a possibility of significant temperature or air pressure changes- e.g. when travelling by plane, if you leave your board in a very hot place (car under summer sun), or if you travel over high altitude mountain passes. Always have the valve inserted and tightened when using the board to avoid damage.



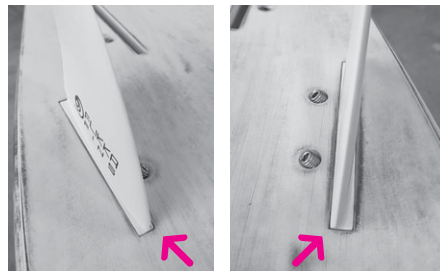
GORE-TEX VENT

If your board comes with the Gore-Tex vent, it will arrive installed, and requires no action (leave it as it is). We recommend that you replace the Gore-Tex vent every 2 years.



FINS

Depending on your order you might receive a fin or a set of fins and some blanking plates. If you have ordered asymmetric fins (model 505), they need to be installed like this:



If there are some boxes unused in your fin configuration it is advised to use blanking plates in order to maximise board performance.



We always test-fit our fins in boards before you take delivery. Fins should be a tight fit in the fin-box. If for some reason you have a fin that will not fit into its box, try giving each side of the fin a light sand with 240 grit sandpaper.

If you're unlucky enough to hit a hard object with your fins you can damage the slot box screws. Spare screws are provided with your board so you can change them.

ALLEN KEY – HEX 4 KEY

A single tool for your air valve, foot straps and slot box fins.



We remind you that windsurfing, and therefore using Flikka boards, comes with risks and has the potential to cause injury. It is recommended that you have insurance to cover your liability when windsurfing. It is also recommended that you consider attending an appropriate training course if you have concerns that your skill level is not commensurate with that required of the board you have purchased or the conditions you plan to sail in.

HAVE FUN ON THE WATER!

INCLUDED:

board	
fins	
additional fins	
foot-straps	
blanking plates	
screws & air valve	
light set	
hex Key	
Flikka keyring	
Flikka sail stickers	
boardbag (optional):	

Packed by: